

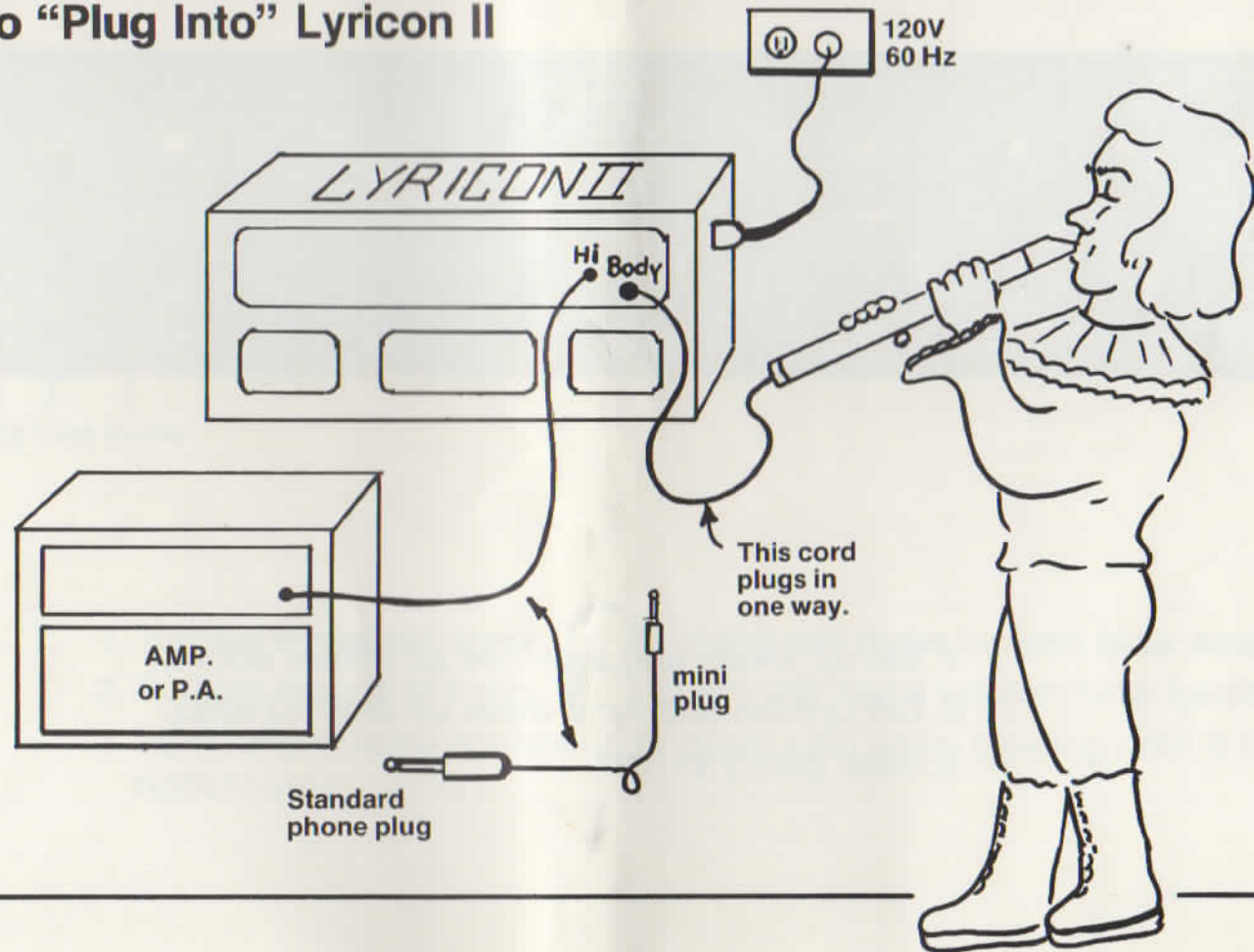
Lyricon II

SIMPLIFIED SET-UP INSTRUCTIONS

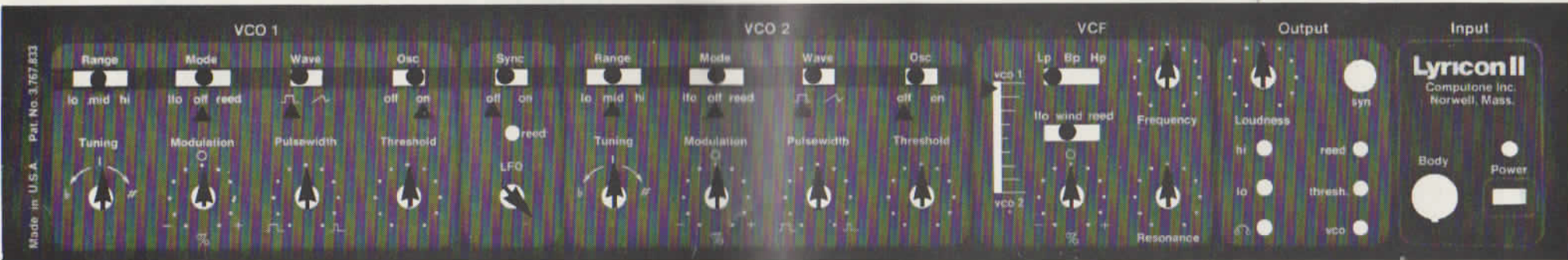
INDEX

How to "Plug Into" Lyricon II	1
How to Get Your First Sound	2
How to Adjust Wind Comfort	3
How to Use the Reed	4
How to Change Octaves	5
How to Get Different Sounds	6
How to Play Both Oscillators Together	7
How to Use The Filter (VCF)	8
Technique and Tips	9

How to "Plug Into" Lyricon II

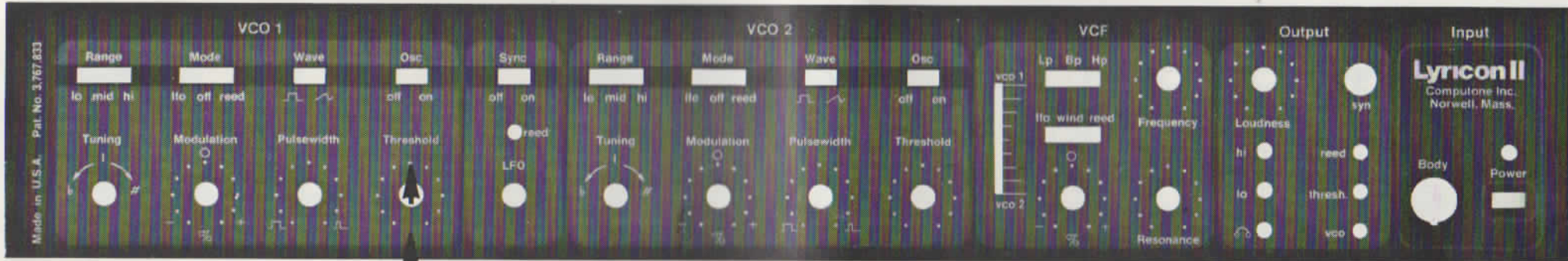


How to Get Your First Sound





1. Set up knobs and switches as shown above.
2. Let Lyricon and Amp warm up (5 to 10 min.).
3. Blow gently at first.

How to Adjust Wind Comfort



USE THIS KNOB

1. Turning threshold knob  (right) will make Lyricon blow **easier**.
2. Turning threshold knob  (left) will make Lyricon blow **harder**.
3. Turn Amp volume control up or down also while blowing until it feels right to you.

How to Use The Reed



1. Move mode switch to **reed** as shown.
2. Turn modulation knob 1 dot left (see above).
3. Pitch should drop about one-half-tone loose lip.
4. Try vibratto and pitch bend with your lip.

How to Change Octaves

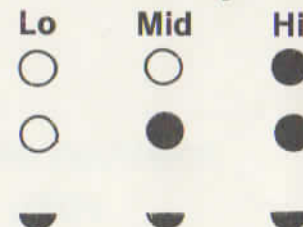


USE THIS SWITCH

1. Thumb keys on body give three registers:
2. Range switch moves instrument pitch range up or down one octave from "mid".

Note: fingering is identical in all registers and ranges.




Thumb keys



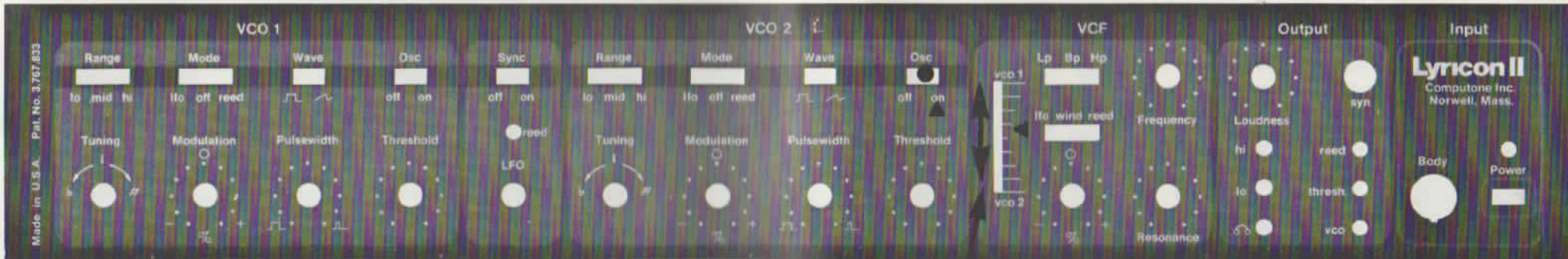
How to Get Different Sounds



USE THE KNOB AND SWITCH IN THIS SECTION.

1. Put wave switch in  position.
2. **Pulsewidth** knob changes character of sound.
3. Play instrument with pulsewidth knob full **left**.
(The sound will resemble a clarinet.)
4. Try playing with pulsewidth knob in various positions.
5. Switch **wave** to  for "heavy" sounds.
(Pulsewidth knob has **no** effect with **wave** switch in .)

How to Play Both Oscillators Together



USE THIS KNOB

1. Turn VCO2 **Osc** switch to “on”.
2. VCO2 controls work the same as VCO1 controls.
3. The slider knob mixes the amount of sound from each oscillator.
4. First try playing with both oscillators tuned to same pitch.
5. Try tuning oscillators to 3rds or 5ths. Use reed to sharp # or flat *b* one oscillator. (Push down knob for coarse tuning.)

How to Use The Filter (VCF)



LFO KNOB

1. Set up knobs and switches as shown above.
2. Blow into instrument and try different wind levels and attacks. (pop the tip of the reed with your tongue for percussive effects.)
3. Move switch from *wind* to *reed* position. Now change filter effects with your *lip* as you blow.
4. Move switch to LFO position. Move LFO knob left and right while blowing. LFO knob speeds up or slows down filter effect.

Technique and Tips

1. Blow **gently** until you feel where your wind has the desired effect. Relax.
2. **Listen** to the sound you are getting from the instrument.
3. **Don't** try to fill the body with air. Let the electronics work for you.
4. Use a **relaxed** jaw and lip until you feel the operating range of the reed.
5. **Don't** try to take the body apart. Please contact the factory if you have any questions.
6. Keep the contacts clean as described in the Owner's Manual.
7. Keep the instrument **turned on** during periods of usage. It will hold pitch better. No need to turn it off between sets.



ampeg

Box 310 / Elkhart, Indiana / 46515

All specifications are subject to change without notice or obligation.

Printed in U.S.A.

COMPUTONE, INC.
PO BOX 433
NORWELL, MA 02061